

ALL NEW

KIN AIC

Angled In-Ceiling Speaker

When light fixtures, heating or cooling vents, and all other potential obstructions prohibit perfect placement within a ceiling, **the KIN AIC** will overcome the issues. The angled baffle directs the sound towards the listening area so no matter how imperfect it's location, the performance is flawless.



KIN AIC is equipped with many features that installers greatly appreciate. Robust steel buttressed framework handles the toughest, most challenging situations. Screw cut-outs in the framework allow flush-to-stud installations where clamps cannot deploy. Dozens of magnets securely grip the grill preventing annoying resonance and unsightly gaps.

KIN AIC features even more for the audio enthusiast. 4" MHEX Phenolic Honeycomb Woven Hybrid woofers and 5" Metal Amalgamation Compound high excursion passive radiators work cohesively for powerful and perfectly tuned bass. The 1" Titanium Infused Soft Dome counterbalances them perfectly with precise and pure high frequencies. An Integrated wood back box ensures reliable and superior performance while providing thorough sound isolation.

KIN AIC is the perfect speaker for an imperfect world. It overcomes any installation challenge while providing the perfect sound staging and phase correctness to bring an absolutely startling emotion-filled musicality.



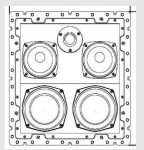
Proprietary MHEX Phenolic Honeycomb Woven Hybrid Woofer



Proprietary Titanium Infused Soft Dome Tweeter

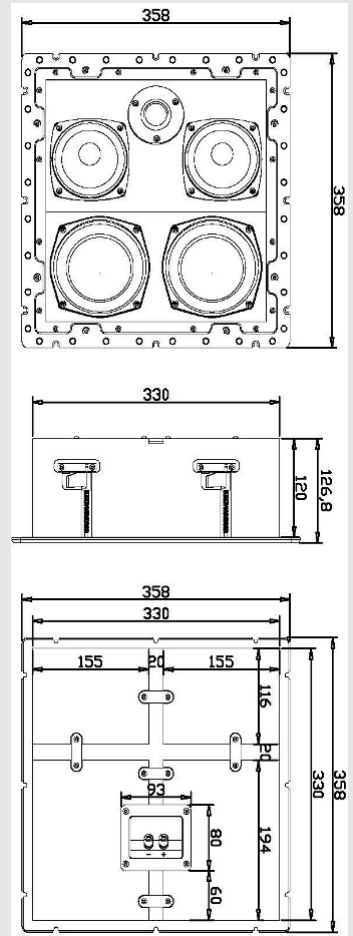


Proprietary Metal Amalgamation Compound high excursion passive radiators

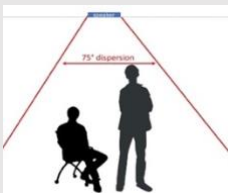


Specifications

Design:	Full back-boxed, high-performance loudspeaker
Frequency Response:	59 Hz - 30 kHz ± 3 dB
Recommended Power:	30 - 120 W
Woofers:	Twin 4"/10.16cm MHEX phenolic honeycomb woven hybris woofer in die-cast basket.
Passive Radiators:	Dual 5" Metal Amalgamation Compound
Tweeter:	1"/2.54 cm Titanium Infused Soft Dome
Impedance:	6 ohms
Sensitivity:	91 dB
Dimensions (W x H x D):	14.09" x 14.09" x 4.72" / 358 x 358 x 120 mm
Cutout:	13.38 x 13.38 / 340 x 340 mm
Grill Type:	Magnetic, Paintable, virtually bezel-less white metal
Accessories:	Pre-Construction Brackets
Speaker Terminals:	two sets of 5-way gold plated binding posts



Huge Dispersion



KIN Architectural disperse at 75 degrees, almost twice as broadly as competitive speakers. Acoustic coverage is totally present throughout the entire listening area. The enormous dispersion allows the listener to enjoy the same sound whether seated or standing, simplifying placement.

Micro-Perf Grill

The almost bezel-less design only adds 4 mm in total width. Micro-perforations provide a uniform look without showing what lies behind.

Pre-Construction Kit



As the KIN Architectural models are all quite substantial, the kits are equally robust. Frames and wings aren't plastic, they're made of metal.